

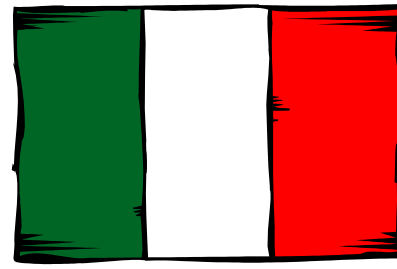
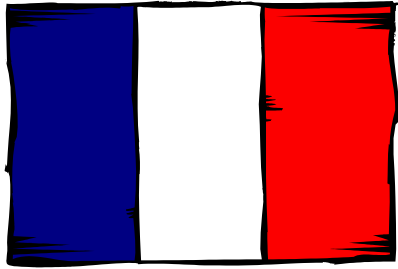


**New Student Orientation
2025-2026**

**Welcome to
G.W. Carver
Middle
School**

**The number one
traditional middle
school in the State
of Florida!**





100% Magnet School

- Magnet is International Education
 - French, German, Italian, and Spanish
 - Two different language programs
 - International Studies (IS)
 - International Education (IE)

An abstract composition of geometric shapes and lines. In the top left, an orange triangle points right. Below it is a brown circle. To the right of the triangle is a green semi-circle. Further right are two vertical brown lines. In the bottom left is a large green circle. To its right are several short, curved brown lines. In the bottom right is an orange square.

- This PowerPoint will be available on our website, you do not need to worry about missing any important information.



Advanced Academic School

- All courses are at the advanced or honors level – honors courses are for high school credit and are on **child's permanent academic record and will impact high school GPA.**

International Studies (IS)

- Student is proficient in French, German, Italian, or Spanish.
- In the **French and Spanish IS** Program, students study **language** as well as **humanities** and **math** in the foreign language.
- In the **German and Italian IS** Program, students study **language** and **humanities** in the foreign language.
- Entry level is 6th, 7th, or 8th grade.





International Education (IE)

- Student wants to learn or become better in French, German, Italian, or Spanish.
- The language component consists of two courses annually; one course emphasizes grammar and vocabulary, the other focuses on communication.
- Entry level is 6th grade only.



School Hours/Drop off and Pick up

- School Hours are 9:10 am – 3:50 pm.
- School is responsible for students ½ hour before school begins and ½ hour after school ends.
- Gate will open at 8:30 am.
- No student will be released within the final 30 minutes of the school day.
- Free breakfast for all students at 8:30 am.
- Pick-up and drop-off areas. **Please pull up to front of line:**
 - Lincoln Drive
 - Loquat
 - Jefferson is for busses **ONLY**
 - No public park dismissal
- School visitors enter through Lincoln Drive only.



Lunches

- Lunch will be available for purchase. If you need assistance with lunch, you are to apply online.
- Students may bring their own lunch from home.
- If a lunch is forgotten it cannot be brought in by the parent. Your child will be provided with a lunch from the cafeteria.



Contacting Teachers

- Early contact with teachers regarding concerns is the best way to alleviate any problems.
- Carver teachers want to help!
- Best way is to send an email.
- Teachers have 48 hours to respond to any message.



Miscellaneous

- The school will not be accepting any materials left by the students at home. This includes homework, books, devices, etc.
- The school will be communicating with parents via School Messenger. Make sure the office has your correct email address and phone numbers.



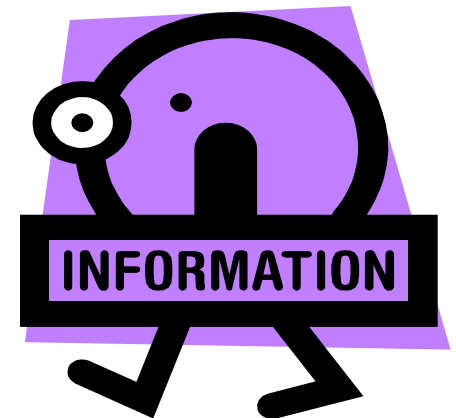
Parent Resource Fair

Friday, August 8, 2025

Between 1:00 pm and 3:00 pm

An **informal** fair for students and parents. During the fair, you will be able to

- Walk the campus and see where your **first class** will be on the first day. Our campus is landlocked, and parking is very limited. We encourage you to locate your child's room on this day so that on the first day you can simply drop off your child and he/she will know where to report.
- Meet the **counselors**
- Buy **required reading books** for the school year
- Buy **uniform patches**
- Buy **Friday shirts**
- Join the various **parent organizations**
- Learn about the **sport teams**
- Learn about the various **clubs**
- Sign up for **"Space Available" Bus**
- Become a **school volunteer**





First Day of School 8/14/25



Students will need to check their Student Portal to know which room to report to on the first day.



Students eligible for transportation will be notified in Student/Parent Portals. It will tell them where the bus stop is and at what time they will be picked up and dropped off.

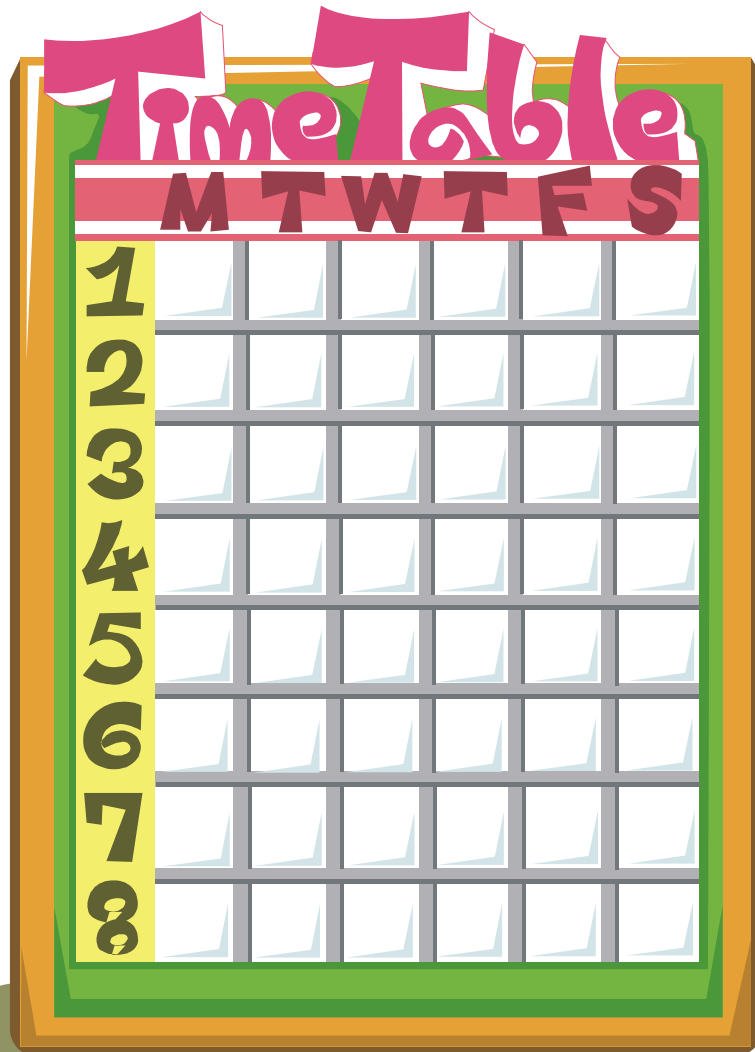


Students should already be familiar with the location of the room they are to report to and should walk directly to that room. Parking on the first day is challenging – so please plan to drop your child off at one of our drop-off locations.



Rolling backpacks are not permitted. Students with a medical need must carry a doctor's note.





Bell Schedule

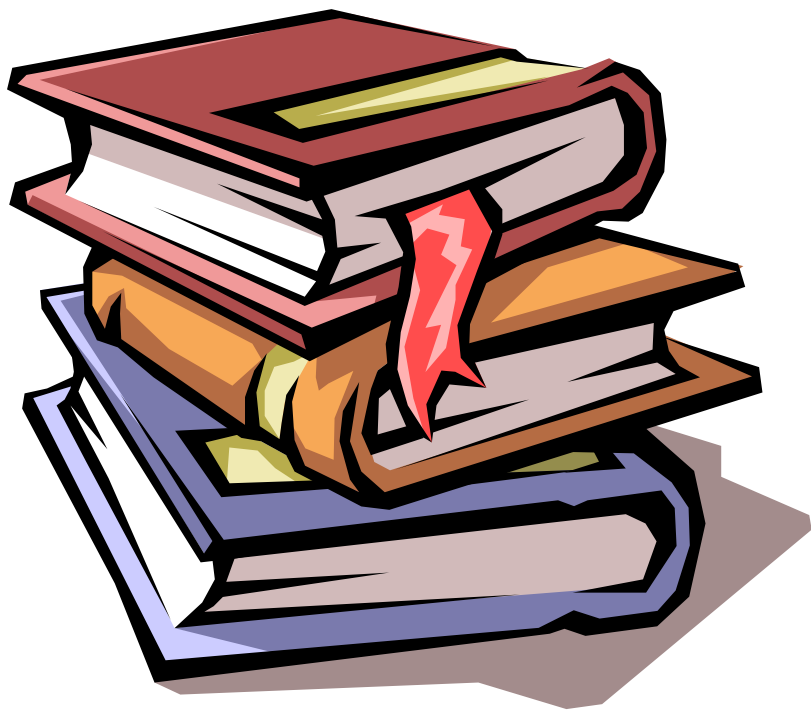
- School hours 9:10 am – 3:50 pm.
- Students will have 7 classes on schedule.
- Only go to 4 classes daily.
- Rotating Block Schedule.
- Even/Odd days.
- Homeroom meets for 10 minutes daily.
- First Period meets daily for 45 minutes.
- All other classes meet for 1 ½ hours every other day.

Bell Schedule (Continued)

2025-2026

Time	Activity	Day 1	Day 2	Day 3	Day 4	Day 5	Day 6
9:00	First Bell						
9:10 – 9:30	Homeroom	HR	HR	HR	HR	HR	HR
9:30 – 10:15	Block 1	1	1	1	1	1	1
10:15 – 10:20	Passing						
10:20 – 11:50	Block 2	2	3	4	5	6	7
11:50 – 11:55	Passing						
11:55 – 2:15	Block 3 & LUNCH	4	5	6	7	2	3
2:15 – 2:20	Passing						
2:20 – 3:50	Block 4	6	7	2	3	4	5

Required Reading – 6th Grade



- 2025 Summer Reading for 6th Graders

City Spies (book 1) by James Ponti

Will be tested on these books when school begins!

- First Book of Fall 2025-2026
 - *Freak the Mighty* by Rodman Philbrick

Required Reading – 7th Grade

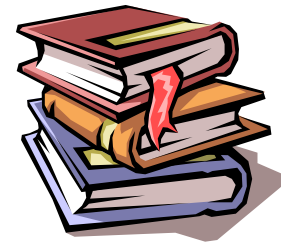
- 2025 Summer Reading for 7th Graders
Choose **two** from the following:
 - *Maybe He Just Likes You* by Barbara Dee
 - *I am Malala (young readers edition)* by Malala Yousafzai and Patricia Mc Cormick
 - *Peak* by Roland Smith
 - *Ghost* by Jason Reynolds

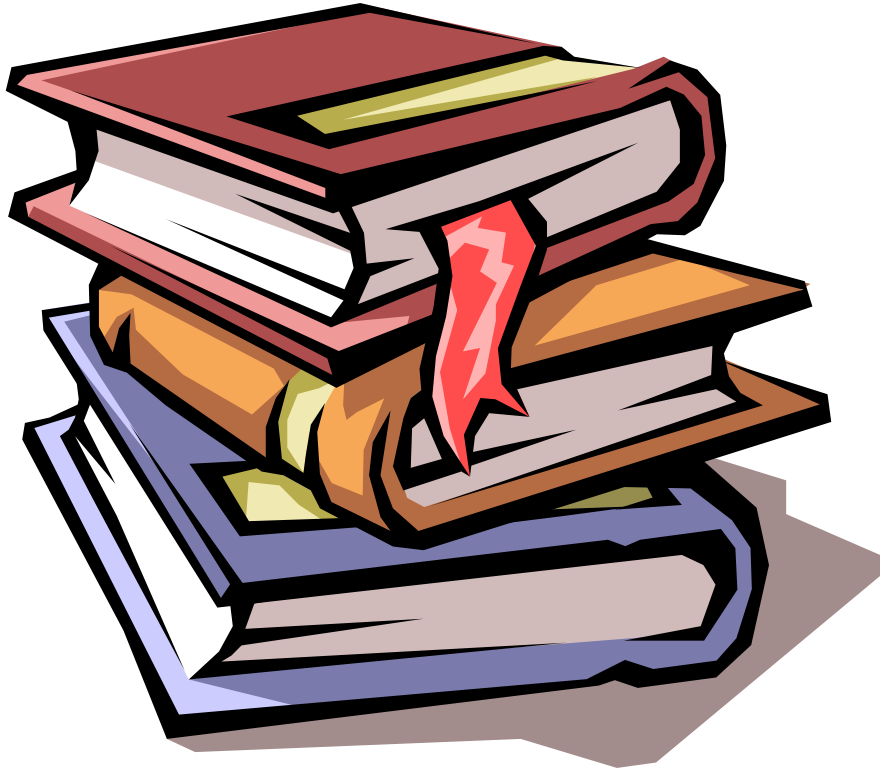
ESOL Students Level 1 or 2 select one book

ESOL Students Level 3 or higher – read two books

Will be tested on these books when school begins!

- First Book of Fall 2025-2026
The Pearl by John Steinbeck





Required Reading – 8th Grade

- 2025 Summer Reading for 8th Graders
 - *The Hobbit* by J.R.R. Tolkien
(ESOL Levels 1 and 2 may read the graphic novel)

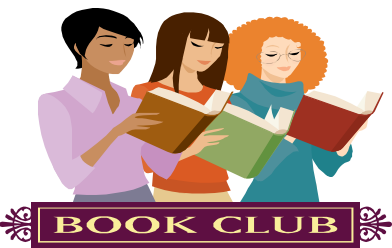
Will be tested on these books when school begins!

- First Book of Fall 2025-2026
 - *We Have Always Lived in the Castle* by Shirley Jackson

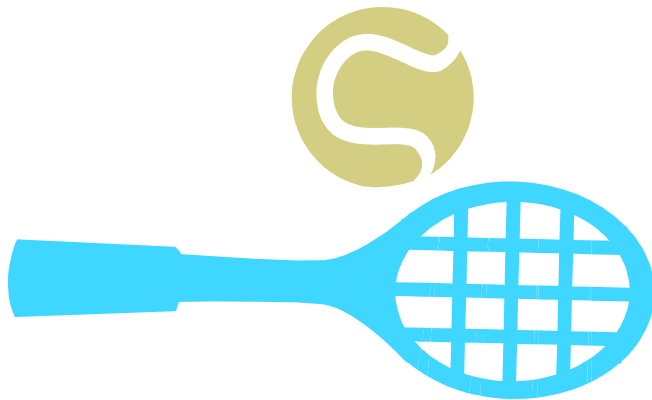
Carver Clubs

Clubs meet on before or after school

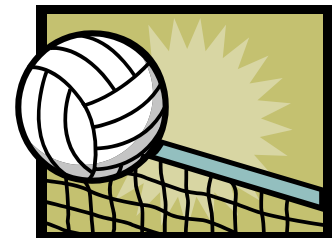
Cheerleaders	Italian International Club
Classic Book	Kids 4 Ocean Club
Dream in Green	Mental Wellness
Environmental Club	National Junior Honor Society
French Drama	Restorative Justice Practice
Future Educators of America	S.A.V.E. Promise
Geography Bee	Spanish Society
History Bee	Student Council



Carver Sports - Teams



- Must try out for teams
- Minimum GPA of 2.5 to be on the team
- Sports are seasonal
- NOT an afterschool care program
 - Cross Country (Boys and Girls)
 - Volleyball (Boys and Girls)
 - Soccer (Boys and Girls)
 - Basketball (Boys and Girls)
 - Tennis (Boys and Girls)
 - Track and Field (Boys and Girls)
 - Bowling (Co-ed)
 - Golf (Co-ed)
 - Flag Football (Boys and Girls)
 - Softball (Boys and Girls)





Parent Organizations

We encourage all parents to join our parent organizations and get involved!

Parent Teacher Student Association (PTSA)

French International Parent Association (FIPA)

German International Parent Association (GIPA)

Italian International Parent Association (IIPA)

Spanish International Parent Association (SIPA)

Dade Partners

Friends of Carver

IMPA Performing

Services - Clinic

- School Nurse
 - Mild Medical Issues
 - Administering Medication (with doctor prescription and waiver)

Must sign consent forms to be seen at the clinic.

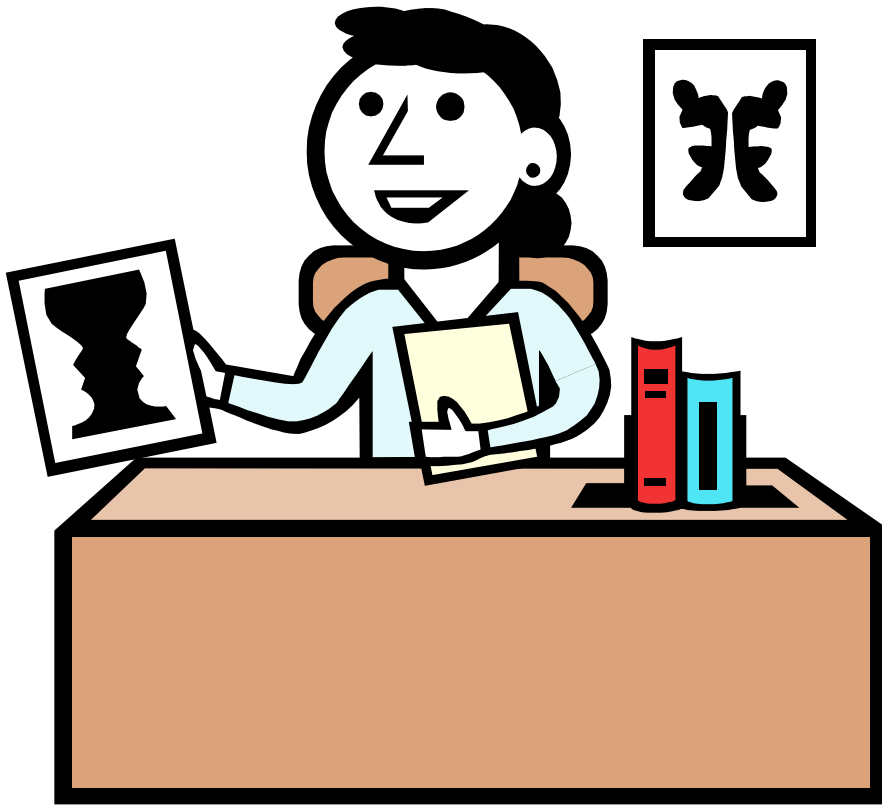
Medication can **only** be dispensed in the clinic.



Services – Social Worker

- Connect Families with Resources
- Attendance Issues
- Home Visits
- Community Liaison





Services - Counselors

Ms. Castillo & Ms. Buzainz

- Study Skills
- Middle School Transitions
- Academic Issues
- Mental Health
- Social/Emotional Learning

Transportation

School Board Rule 6GX13-6A-1.46 governs the transportation policy at G.W. Carver Middle School. Accordingly, public transportation will only be provided for students who live in excess of two miles from G.W. Carver Middle School and within the boundaries of the identified transportation service zones.



Transportation (continued)

Eligibility for transportation is determined by the location of the student's residence and not necessarily by the elementary school the child attended. The student must live within the boundaries of the identified transportation service zones to be eligible for transportation.



Transportation (continued)

- Provisions for transportation services are reviewed annually and may be eliminated at any time due to budgetary constraints. Therefore, please be advised that in the event that magnet transportation cannot be provided, parents will need to plan accordingly their acceptance to a particular magnet program and/or their ability to provide transportation.



Transportation Service Zone



- Must live more than 2 miles away from school and between the following areas:
- 836 south to 104 Street
- 826 and east
- Key Biscayne is included

Transportation (continued)

- Space Available Bus
 - If you see a bus route that is convenient to you, you may sign up for “space available” . Sign up takes place on August 8, 2025, at the Parent Resource Fair. “Space available” riding will be granted **ONLY** if there is space available on the bus you have selected. **IT IS NOT GUARANTEED AND IT WILL NOT BEGIN UNTIL AFTER THE 2ND WEEK OF SCHOOL.**
 - We will notify you when and if you will be given a pass for space available riding.
 - Students cycling to school may lock their bikes on the bike rack by the new building.



Dress Code

We will enforce a strict dress code at Carver. In addition to always meeting MDCPS dress code, additional rules apply:

Tops:

- Uniform-standard 3-button loose polo shirt
- G.W. Carver Middle logo on the upper left- hand side (embroidered or sewn-on patch)
- Orange, hunter green, or white



Dress Code (Continued)

Bottoms:

- Standard uniform pants (chino)
 - No leggings
- Bermuda Shorts
 - Khaki or navy in color
 - Shorts must be no more than two inches above the knee in length. Students may not roll the Bermudas.

Shoes: Closed shoes only.



Dress Code ✓ (continued)

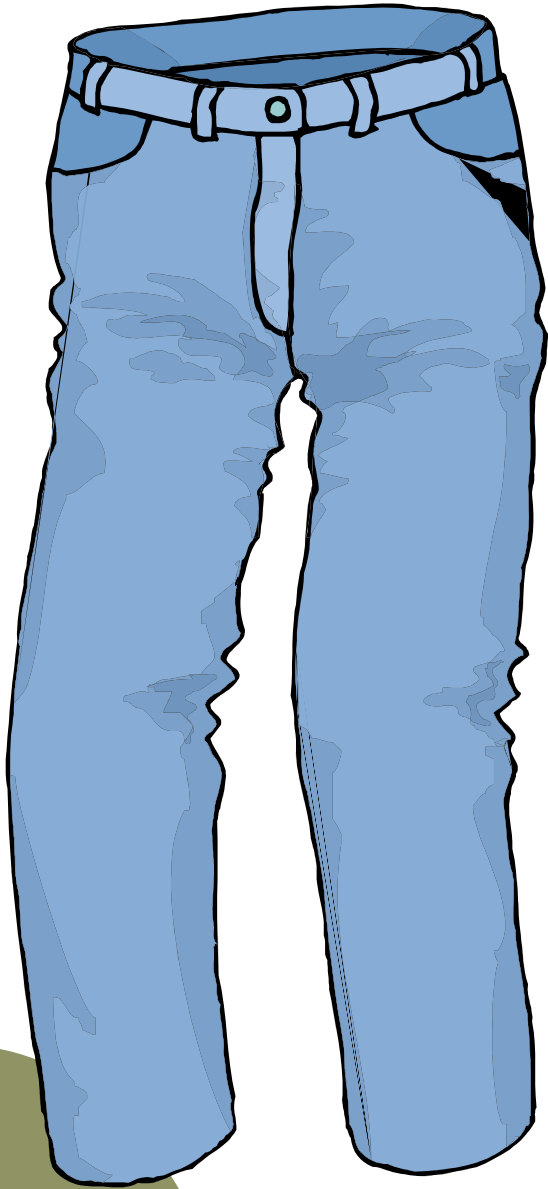
Cold Weather Wear:

Jacket or sweater may be worn,
they must:

- Be plain gray only
- Have buttons or a zipper down the front.
- Conform to M-DCPS's students' dress code

**No pullover sweaters or
sweatshirts are permitted
unless it is an official Carver
top.**





Dress Code (continued)

The last Friday of every month will be “Jean Day”. Students may wear:

- **standard-fit blue** jean bottoms with school uniform tops, club shirts, or Friday shirts. No ripped jeans.
- **G.W. Carver** sweatpants.

Student ID’s must be worn every school day with a lanyard.

Attendance Policy

G.W. Carver Middle has an attendance monitoring process that determines whether a student's absence is deemed excused or unexcused. When a student is going to be absent or tardy, the parent must write a note and the student must turn in the note to the school's registrar within three days after returning to school. If the student is absent three or more days, a doctors note is required when returning to school.



Attendance Policy (continued)

The following are the Miami-Dade County School Board reasons for an excused absence:

- ❖ Student illness
- ❖ Death in the family
- ❖ Observance of approved religious holiday

All other absences are unexcused.



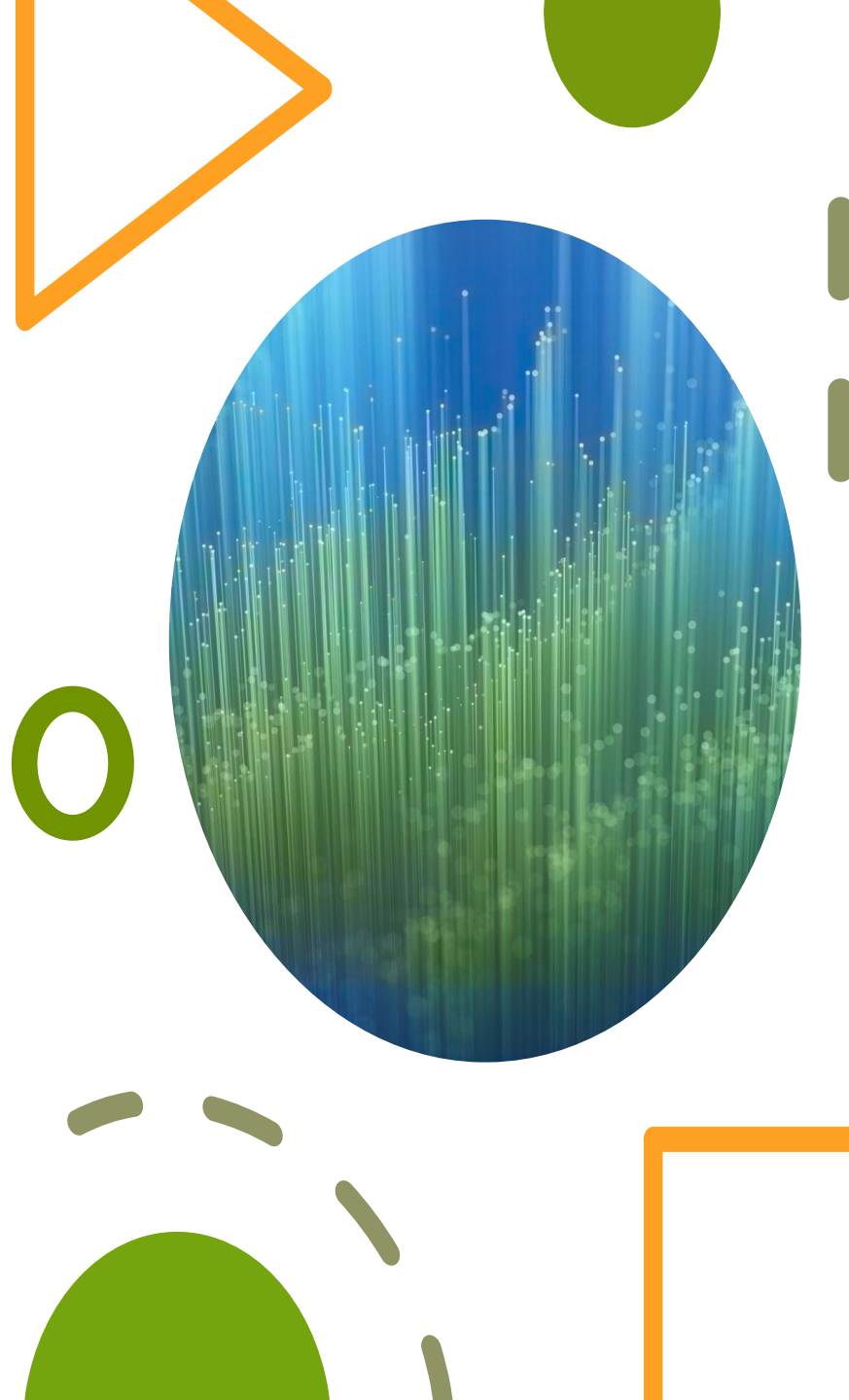
Attendance Policy (continued)

Most secondary schools look at attendance trends and use this data as part of their admission requirements.

This includes private schools. Therefore, excellent attendance does not just impact the present educational experience in a highly positive manner, but lack of good attendance also may impact future educational opportunities. Don't put your child at a disadvantage.



Of course, if your child is ill, the student should stay home. Be mindful that if your child is always ill, this is something you should address with your pediatrician.

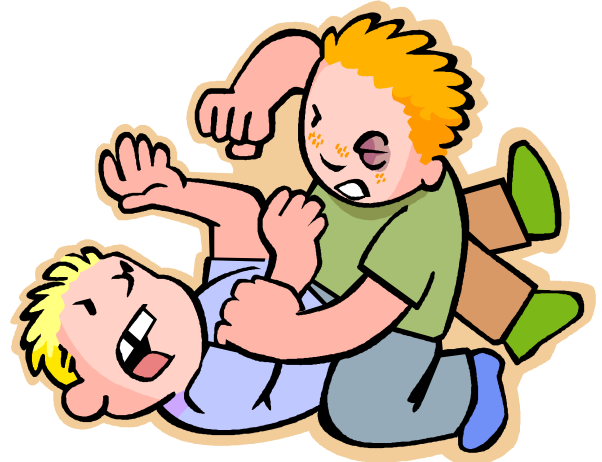


Code of Student Conduct

The Code of Student Conduct (COSC) defines violations which are representative of those acts that frequently cause disruption of the orderly educational process. This list is not all-inclusive and committing an act of misconduct not listed will be subject to the discretionary authority of an administrator. The COSC can be accessed at

<http://ehandbooks.dadeschools.net/policies/90/index/htm>.

Parents, please review the COSC with your child.



Withdrawal Policy

When a child is withdrawn from G.W. Carver Middle School, he/she will not be re-enrolled. A child can re-apply during the application period for the following school year to the International Studies (IS) Program if he/she is eligible. THERE ARE NO EXCEPTIONS TO THIS RULE.



Curriculum



Advanced Classes

All students, after completing the 8th grade have their 9th grade Algebra class and 9th grade Physical Science class completed – which makes them **eligible to apply to an IB high school**.

The high school level courses taken here at Carver (Foreign Languages, Algebra, Geometry, Physical Science, & Biology) **will be on the students' permanent transcript and have an impact on high school GPA.**

An average student will leave Carver with 5 high school credits, some may even earn 7 high school credits.



Gifted Classes (6, 7, and 8th Grade)

Language Arts

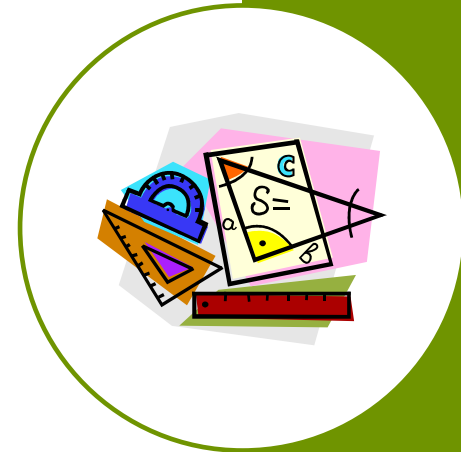
Social Studies

Gifted Resource - elective



Curriculum (continued)

- Foreign Languages
 - All students, after completing the 8th grade at Carver have **three high school credits for foreign language**. Students in the IS Program will take an **Advanced Placement Test in 8th grade**. AP passing scores of a 3 or higher may receive **college credit** depending on the university's requirements.



Curriculum (continued)

- **Electives**
 - Art (full year)
 - Band (full year)
 - Theater I (full year)
 - Chorus (full year)
 - Orchestra (full year)
 - Creative Writing and Journalism
 - Gifted (Full year – Must have met gifted eligibility)
 - Television Broadcasting
 - Phys. Ed (half the year) & Art (half the year)
 - Phys. Ed (half the year) & Band (half the year)
 - Phys. Ed. (half the year) & Chorus (half the year)
 - Critical Thinking (Innovative Space, Project Based Learning, Makerspace lab)




Dates to Remember


- August 8, 2025 –
Parent Resource Fair
- August 14, 2025 –
First Day of School



**Thank you and once again
Welcome to G.W. Carver
Middle School**

A large, solid green circle is positioned on the left side of the slide, partially cut off by the edge.

You can view this PowerPoint
Presentation on our
website
gwcmmiddleschool.net

A decorative, curved line composed of several segments, colored in a light olive green, is located in the bottom right corner of the slide.